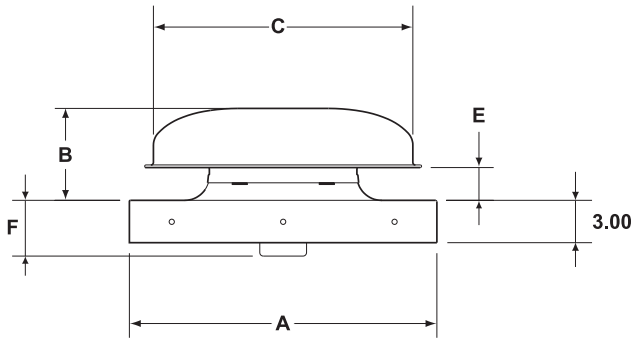




Est. 1938

Direct Drive Propeller Roof Fan Model LQ

Model LQ ventilators are direct drive propeller roof fans designed to deliver large volumes of air at high static pressure. LQ fans operate more quietly than conventional propeller roof ventilators and are recommended for applications requiring lower noise levels. The low silhouette of the LQ harmonizes with modern architectural design.



LQ EXHAUST DIMENSIONS									
Fan Model	A	B	C	E	F	Roof Opening*	Damper Model**	Curb Model	Damper Box Model
LQ10	22.00	6.61	18.63	2.36	4.41	17.50 x 17.50	AR14	C20.5	DB14LQ
LQ12	24.00	6.74	21.00	2.49	7.88	19.50 x 19.50	AR16	C22.5	DB16LQ
LQ14	26.00	8.10	24.00	3.35	8.06	21.50 x 21.50	AR18	C24.5	DB18LQ
LQ16	28.00	9.83	27.63	4.58	9.00	23.50 x 23.50	AR20	C26.5	DB20LQ
LQ18	31.00	10.76	31.60	5.01	7.42	26.50 x 26.50	AR23	C29.5	DB23LQ
LQ21	34.00	12.09	36.72	5.47	9.00	29.50 x 29.50	AR26	C32.5	DB26LQ
LQ24	38.00	13.70	41.38	5.20	11.25	33.50 x 33.50	AR30	C36.5	DB30LQ
LQ30	46.00	15.89	52.13	6.89	13.06	41.50 x 41.50	AR38	C44.5	DB38LQ
LQ36	52.50	19.00	62.38	8.13	12.75	48.00 x 48.00	AR44	C51	DB44LQ

Dimensions are shown in inches.

*Recommended maximum.

**Requires DB damper box.

LQ-S SUPPLY DIMENSIONS									
Fan Model	A	B	C	E	F	Roof Opening*	Damper Model**	Curb Model	Damper Box Model
LQ-S12	24.00	7.24	24.00	2.50	7.88	19.50 x 19.50	WAGC16	C22.5	DB16LQ
LQ-S14	26.00	9.41	27.63	4.16	8.06	21.50 x 21.50	WAGC18	C24.5	DB18LQ
LQ-S16	28.00	10.31	31.60	4.56	9.00	23.50 x 23.50	WAGC20	C26.5	DB20LQ
LQ-S18	31.00	11.84	36.00	5.22	10.66	26.50 x 26.50	WAGC23	C29.5	DB23LQ
LQ-S21	34.00	13.48	41.38	4.98	13.45	29.50 x 29.50	WAGC26	C32.5	DB26LQ
LQ-S24	38.00	13.70	41.38	5.20	11.25	33.50 x 33.50	WAGC30	C36.5	DB30LQ
LQ-S30	46.00	15.89	52.13	6.89	13.06	41.50 x 41.50	WAGC38	C44.5	DB38LQ
LQ-S36	52.50	18.67	62.00	9.67	12.81	48.00 x 48.00	WAGC44	C51	DB44LQ

Dimensions are shown in inches.

*Recommended maximum.

**Requires DB damper box.



Acme Engineering & Manufacturing Corporation certifies that the models shown herein are licensed to bear the AMCA seal. The ratings shown are based on tests and procedures performed in accordance with AMCA Publication 211 and AMCA Publication 311 and comply with the requirements of the AMCA Certified Ratings Program.

Construction Features

Housing

- Hood, orifice and curbcap constructed of heavy gauge aluminum
- Removable hood for easy access to motor and propeller
- Large streamlined orifice permits efficient, less turbulent airflow
- Rugged steel frame transmits weight of motor and propeller directly to curbcap
- Birdscreen constructed of heavy gauge galvanized steel wire mesh

Propeller

- Advanced tear-drop blade design for low noise performance with a minimum of air turbulence
- Constructed of aluminum blades fastened to a formed steel hub with heavy duty rivets
- Precision balanced for smooth vibration free operation

Motors

- Totally enclosed continuous duty type with lubricated sealed ball bearings
- Located in the full airstream for cooler operation and longer life under continuous duty

Finish

- Charcoal baked enamel finish is standard on all steel parts

Options/Accessories

- Prefabricated Curbs
- Dampers
- Damper Boxes
- Coatings
- Solid State Controllers not mounted or wired
- NEMA 3R disconnect not mounted or wired
- Hinge Kit

Propeller Roof Fans



Consult your Acme representative for availability.

SUPPLY VENTILATORS

PERFORMANCE DATA																		
Fan Model	RPM	Tip Speed Ft./ Min.	HP	Sones @ .000" SP	CFM vs. Static Pressure												Max. BHP	Est. Ship Wt. lbs.
					.000"	.100"	.125"	.250"	.375"	.500"	.625"	.750"	.875"	1.000"	1.125"	1.250"		
LQ-S12A6	1160	3590	.05	5.8	920	550	465										.050	49
LQ-S12D4	1760	5445	.17	11.9	1395	1240	1180	835									.176	51
LQ-S14B6	1160	4150	.08	7.1	1075	840	740										.059	52
LQ-S14E4	1760	6295	.25	14.5	1630	1500	1460	1235	875								.210	57
LQ-S16C6	1160	4800	.13	9.4	1790	1440	1405										.135	68
LQ-S16D6	1160	4800	.17	11.8	1965	1440											.178	70
LQ-S16F4	1760	7280	.33	17.8	2310	2240	2210	1790	1510	1205							.402	66
LQ-S16G4	1760	7280	.50	18.3	2720	2530	2475	2100	1595								.476	76
LQ-S16H4	1760	7280	.75	21	2980	2690	2625										.705	76
LQ-S18D8	860	4080	.17	9.1	2175	1725	1620	995									.206	139
LQ-S18E6	1160	5505	.25	12.4	2655	2410	2350	2000	1605								.320	137
LQ-S18J4	1760	8350	1.00	23	4030	3860	3820	3615	3390	3160	2915	2665	2415	2150	1885	1620	1.130	155
LQ-S18K4	1760	8350	1.50	34	4450	4240	4180	3920	3640	3340	3010	2690	2490	2200			1.760	156
LQ-S21D8	860	4690	.17	8.6	2585	2245	2155	1745	1335								.216	161
LQ-S21F8	860	4690	.33	10.4	3140	2745	2625	2000	1190								.350	173
LQ-S21G6	1160	6325	.50	14.1	3485	3240	3175	2850	2530	2250	1950	1580	1075				.530	173
LQ-S21H6	1160	6325	.75	19.3	4235	3925	3850	3430	3000	2535	1990	1055					.850	177
LQ-S21K4	1760	9595	1.50	32	5270	5145	5110	4945	4755	4520	4150	3580	3280	3090	2945	2800	1.675	178
LQ-S24F8	860	5430	.33	11.5	3750	3420	3330	2840	2275								.384	183
LQ-S24H6	1160	7325	.75	20	5030	4790	4720	4360	3950	3580	3210	2800					.897	187
LQ-S24J6	1160	7325	1.00	21	5550	5240	5160	4760	4360	3970	3570	3140					1.173	209
LQ-S30J8	860	6700	1.00	19.4	6870	6400	6280	5660	4980	4120	3170						1.070	301
LQ-S30K8	860	6700	1.50	19.7	8040	7460	7320	6620	5800	4350	3470	2280					1.570	334
LQ-S30L6	1160	9035	2.00	30	9380	9070	9000	8590	8130	7690	7140	6550					2.380	334
LQ-S30M6	1160	9035	3.00	34	10700	10270	10180	9750	9420	9110	8480	7690	6750	5260			3.490	340
LQ-S36L8	860	8020	2.00	21	10550	10000	9870	9190	8500	7800	7080	6340	5530	4690			2.170	409
LQ-S36M8	860	8020	3.00	26	13500	12980	12850	12120	11380	10570	9740	8830	7900	6920	5830	4600	3.490	426

Performance certified is for installation Type A - Free inlet, Free outlet. Performance ratings include the effects of a birdscreen. The sound level ratings shown are loudness values in hemispherical sones at 1.5 m (5 ft) in a hemispherical free field calculated per AMCA Standard 301. Values shown are for Installation Type A: Free outlet hemispherical sone levels. The brake horsepower capability of a fan motor is dependent of the degree of cooling the motor receives from the moving airstream over the motor. The motor loading beyond the motor nameplate rating does not overheat the motor and is within NEMA recommended limits. It is therefore not detrimental to the motor and is economically desirable.

For more information on this product contact your sales support.

